

## ISUZU 3.5T Refrigerator Truck Euro 5 Gasoline Manual Transmission

Our Product Introduction

for more products please visit us on [commercial-autos.com](http://commercial-autos.com)

### Basic Information

- Place of Origin: Henan, China, contact us
- Brand Name: ISUZU
- Minimum Order Quantity: 1
- Price: US\$20,900



### Product Specification

- Transmission Type: Manual
- Horsepower: < 150hp
- Emission Standard: EURO 5
- Fuel Type: Gasoline
- Gross Vehicle Weight: 5-10T
- Maximum Torque: 1500-2000Nm
- Load Capacity: 1-10T
- Engine Capacity: 4 - 6L
- Max Speed: 90km/h
- Transmission Gears: 5-Speed
- Fuel Savings: 10% - 15%
- Noise Level: Lower
- Vibration Level: Less Jitter
- Driving Comfort: Quieter And More Comfortable
- Urea Injection: High Precision Calibration



### More Images



## Product Description

### ISUZU 3.5 Tons Refrigerator Truck

#### Key Specifications

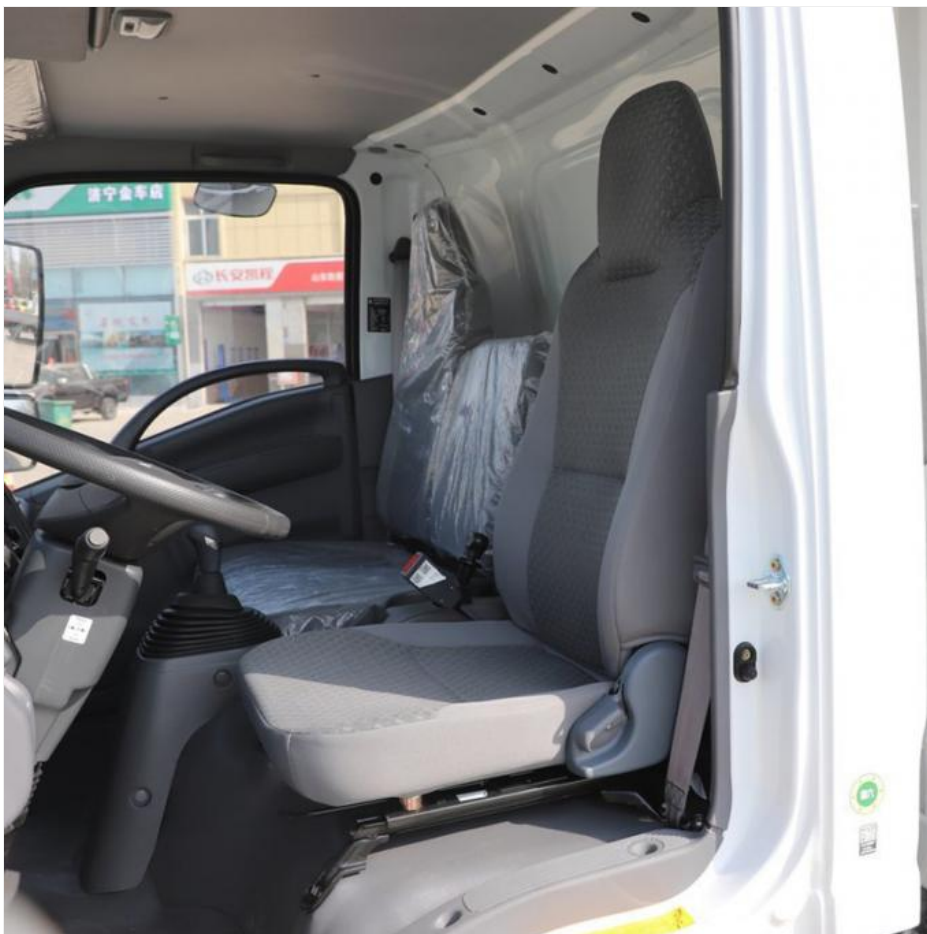
Attribute	Value
Model	ISUZU Refrigerator Truck
Transmission Type	Manual (5-speed)
Condition	New
Horsepower	< 150hp
Emission Standard	EURO 5
Fuel Type	Gasoline
Gross Vehicle Weight	5-10T
Maximum Torque	1500-2000Nm
Capacity (Load)	1-10T
Engine Capacity	4-6L
Maximum Speed	90km/h
After-sales Service	Onsite Installation, Video technical support, Online support

#### Product Features

- Low emission and low fuel consumption throughout vehicle lifecycle
- Improved performance with lower noise and reduced vibration
- 10-15% better fuel efficiency compared to similar domestic vehicles
- High precision urea injection calibration reduces operating costs
- Quieter and more comfortable driving experience

#### Product Images







### **Packaging & Delivery**

Professional, environmentally friendly, and efficient packaging services ensure the safety of your goods during transportation.





## TRANSPORTATION

Before the logistics transportation, we will have multiple processes to inspect and package the products to ensure that each product is delivered to customers with good quality.



### Company Profile

Established in 2017 and headquartered in Zhengzhou, China, we maintain partnerships with over 35 4S shops and 10 after-sales maintenance sites. Our monthly supply capacity includes:

- 1000+ units of electric vehicles
- 100+ units of pre-owned commercial vehicles
- 200+ units of specialty trucks including refrigeration models

We provide comprehensive after-sales support and spare parts services.

### Certifications



