



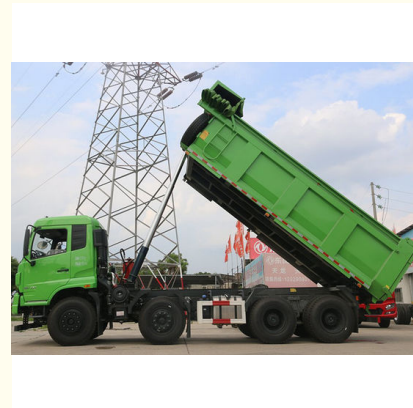
## Used 6x4 10 Wheel Medium Dump Trucks Urban Construction Muck Transportation

Our Product Introduction

for more products please visit us on [commercial-autos.com](http://commercial-autos.com)

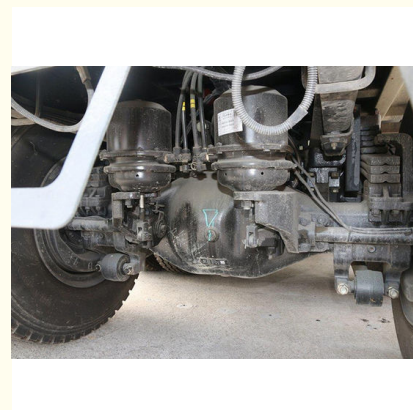
### Basic Information

- Place of Origin: Hubei, China
- Brand Name: DONGFENG
- Minimum Order Quantity: 1
- Price: Available for negotiation
- Packaging Details: Waxing in Bulk ship, Roro ship, Container
- Delivery Time: 30-45 working days
- Payment Terms: T/T
- Supply Ability: 1,000 units per month



### Product Specification

- Condition: New
- Steering: Left
- Horsepower: 351 - 450hp
- Emission Standard: Euro 6
- Segement: Heavy Truck
- Market Segement: Urban Construction Muck Transportation
- Engine Brand: DONGFENG
- Fuel Type: Diesel
- Gear Box Brand: DONGFENG
- Transmission Type: Manual
- Forward Shift Number: 12
- Reverse Shift Number: 2
- Maximum Torque(Nm): 2000-2500Nm
- Dimensions (L X W X H) (mm): 9.6\*2.5\*3.6



### More Images



## Product Description

### Product features:

Equipped with an on-board intelligent monitoring system, which monitors the vehicle surroundings in real time through the camera to avoid collision accidents.

Installed with vehicle status monitoring sensors, it can real-time monitor the operating status of key components such as engine, transmission, tires, etc., and warn of failures in advance.

Equipped with GPS positioning system, it can track the location of the vehicle in real time, which is convenient for mining enterprises to carry out scheduling management.

### Product usage:

Used in large-scale transportation management of large-scale mining enterprises to realize unified scheduling and efficient management of vehicles through intelligent monitoring.

In the joint mining project of mines, it provides vehicle operation data for each participant, which facilitates collaborative operation.

Applicable to emergency rescue transportation in mines, ensuring timely and safe delivery of rescue materials through positioning and monitoring.

### Product advantages:

Intelligent monitoring system improves the safety and reliability of vehicle operation and reduces the probability of accidents. Real-time vehicle status monitoring and positioning function facilitates enterprises to reasonably arrange transportation tasks and optimize resource allocation.

It provides support for the digital management of mining enterprises and improves the management level and operational efficiency of enterprises.

### After-sales service

AUTOKING has four overseas branches to develop overseas customers. We also carry out after-sales service guarantee for vehicles.

### Is the price cheap?

The price is chosen by comparing several car manufacturers, and we also hope that customers can compare several times and finally choose our company.

### Is international logistics guaranteed?

After the purchase of goods are shipped, the company tracks the order in full. Shipping video and transport video we provide for you at any time.

### Specification:

|                    |             |
|--------------------|-------------|
| Brand Name         | Howo        |
| Drive type         | 8*4         |
| place of Origin    | China       |
| Fuel type          | Diesel fuel |
| Steering           | Left        |
| Condition          | New         |
| Emission Standards | Euro VI     |






 **AUTOKING** Henan Autoking Industry Co., Ltd.

 +8618300655268

 [video@autoking.com](mailto:video@autoking.com)

 [commercial-autos.com](http://commercial-autos.com)

No. 86, Jingsan Road, Jinshui District, Zhengzhou City, Henan Province, China