

## 10000kg 15000kg Tow Truck Wrecker JAC Electric Motor Wrecker

Our Product Introduction

for more products please visit us on [commercial-autos.com](http://commercial-autos.com)

### Basic Information

- Place of Origin: China
- Brand Name: JAC
- Minimum Order Quantity: 1
- Price: Available for negotiation
- Packaging Details: Waxing in Bulk ship, Roro ship, Container
- Delivery Time: 30-45 working days
- Payment Terms: T/T
- Supply Ability: 1,000 units per month

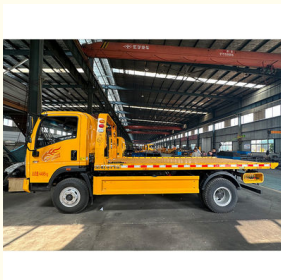


### Product Specification

- Fuel Type: Diesel
- Emission Standard: EURO 5
- Condition: New
- Transmission Type: Manual
- Dimensions (L X W X H) (mm): 5995\*2300\*2180
- Highlight: 15000kg Tow Truck Wrecker, 10000kg Tow Truck Wrecker, JAC Electric Motor Wrecker



### More Images



## Product Description

Towing Wrecker Truck JAC Electric Motor Wrecker Tow Truck Wrecker 10 Tons, 15 Tons Wrecker Truck

### Product features:

**Safety:** Safety factors are taken into consideration during the design, and necessary safety devices such as warning lights and straps are equipped to ensure the safety of rescue operations.

**Wide applicability:** Flatbed tow trucks are suitable for a variety of road conditions such as highways and urban streets, and can cope with different types of rescue tasks.

### Product usage:

**Emergency rescue:** In natural disasters or other emergencies, flatbed tow trucks can participate in rescue operations and help transfer materials or equipment.

**Road rescue:** Flatbed tow trucks can quickly respond to accident vehicles or faulty vehicles on the road, provide rescue services, help vehicles get out of trouble, and restore smooth traffic.

### Product advantages:

**Versatility:** Flatbed tow trucks can not only tow damaged vehicles, but also lift and carry vehicles through additional equipment such as vehicle cranes, which improves the flexibility and efficiency of rescue.

**Safety:** Flatbed tow trucks are usually equipped with advanced safety devices, such as hydraulic systems, stable binding devices, etc., to ensure the safety of vehicles during transportation.

### Specification:

|                    |                      |
|--------------------|----------------------|
| Brand Name         | JAC                  |
| Type               | One-to-one tow truck |
| place of Origin    | China                |
| Fuel type          | Diesel fuel          |
| Steering           | Left                 |
| Condition          | New                  |
| Emission Standards | Euro V               |





