



Hino 30 Ton Crawler HOWO Dump Truck 6*4 Drive Wheel For Transportation

Basic Information

- Place of Origin: China
- Minimum Order Quantity: 1
- Price: Available for negotiation
- Packaging Details: Waxing in Bulk ship, Roro ship, Container
- Delivery Time: 30-45 working days
- Payment Terms: T/T
- Supply Ability: 1,000 units per month

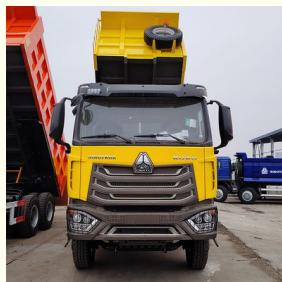


Product Specification

- Condition: New
- Steering: Left
- Horsepower: 251 - 350hp
- Emission Standard: EURO 5
- Segement: Medium-sized Truck
- Market Segement: Engineering Transportation
- Forward Shift Number: 12
- Maximum Torque(Nm): 1500-2000Nm
- Cargo Tank Dimension: 6300X2350X1500mm
- Cargo Tank Length: 5.3-6.2M
- Gross Vehicle Weight: 5-10T
- Drive Wheel: 6x4
- Passengers: 3
- Rear Camera: 360°
- ABS(Antilock Braking): Yes



More Images



Product Description

5.3-6.2M Cargo Tank Length Hino 30 Ton Crawler HOWO Dump Truck 6*4 For Transportation

Product features:

Strong engine power, stable and efficient output.
High-quality steel is used to build the frame, which is sturdy and durable.
Advanced suspension system reduces bumps and improves driving smoothness.

Product uses:

Widely used in large construction sites, transporting earth and building materials.
In mining operations, transporting ores, slag and so on.
Participate in road construction projects, transporting sand and gravel and other basic materials.

Product advantages:

Strong load carrying capacity, able to cope with heavy-duty tasks.
Good fuel economy, reduce operation cost.
Simple vehicle maintenance and easy access to spare parts.

After-sales service

AUTOKING has four overseas branches to develop overseas customers. We also carry out after-sales service guarantee for vehicles.

Is the price cheap?

The price is chosen by comparing several car manufacturers, and we also hope that customers can compare several times and finally choose our company.

Is international logistics guaranteed?

After the purchase of goods are shipped, the company tracks the order in full. Shipping video and transport video we provide for you at any time.

Specification:


main parameters	
Condition	New
Steering	left
Horsepower	380hp
Emission Standard	EURO 5
Forward Shift Number	12
Maximum Torque(Nm)	1900
Cargo Tank Dimension	6300X2350X1500mm
Drive Wheel	6X4
Passengers	3
Rear Camera	360°
ABS(Antilock Braking System)	YES

ESC(Electronic Stability Control System)	YES
Touch Screen	YES






 **AUTOKING** Henan Autoking Industry Co., Ltd.

 +8618300655268

 video@autoking.com

 commercial-autos.com

No. 86, Jingsan Road, Jinshui District, Zhengzhou City, Henan Province, China