



15 Ton Howo Dump Truck 8x4 Articulated Dump Truck Dongfeng Dump Truck Hydraulic Hoist Body

Our Product Introduction

for more products please visit us on commercial-autos.com

Basic Information

- Place of Origin: China
- Minimum Order Quantity: 1
- Price: Available for negotiation
- Packaging Details: Waxing in Bulk ship, Roro ship, Container
- Delivery Time: 30-45 working days
- Payment Terms: T/T
- Supply Ability: 1,000 units per month

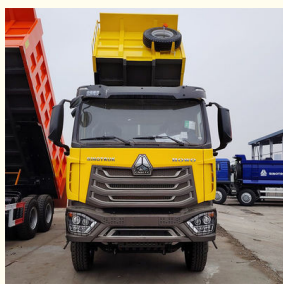


Product Specification

- Condition: New
- Steering: Left
- Horsepower: 251 - 350hp
- Emission Standard: EURO 5
- Segement: Medium-sized Truck
- Market Segement: Urban Construction Muck Transportation
- Forward Shift Number: 12
- Maximum Torque(Nm): 1500-2000Nm
- Cargo Tank Dimension: 6300X2350X1500mm
- Cargo Tank Length: 4.2-5.3m
- Gross Vehicle Weight: 5-10T
- Drive Wheel: 6x4
- Passengers: 3
- Rear Camera: 360°
- ABS(Antilock Braking): Yes



More Images



Product Description

Product features:

The compact space on the right side of the chassis houses the gas tank, battery and FAW Jiefang's unique gas-driven SCR urea device, maximizing the utilization of the effective chassis space. In addition, the original vehicle's standard metal guardrail adopts a solid and reliable double-positioned U-shaped design to reduce maintenance costs during daily use. The front double steering axle adopts 10-leaf spring steel plate suspension, and the 300-type double parallel drive axle adopts 12-leaf spring weighted steel plate suspension fixed by double lifting horse trucks. The latter should be reset regularly during long-term use to reduce the occurrence of axle displacement.

This model adopts a more compact short wheelbase design, the optimized layout of chassis components is meticulous, the role of external protective parts is also particularly sophisticated, and the heavy-duty steel plate suspension has more obvious advantages in load-bearing capacity.

Product advantages:

Compared with the rear hydraulic oil jack, the front hydraulic oil jack adopts a lower center of gravity design, which is safer during the lifting process and can achieve effective support without the installation of a sub-beam.

The left steering axle is previously equipped with an air filter, which is convenient for later replacement for vehicles with complex driving conditions, eliminating the extra time incurred by lifting the cab for replacement of such internal parts. A 200L iron fuel tank is installed in the middle of the rear axle on the left side of the chassis. Based on the average fuel consumption of 35L per 100km, the cruising range of about 550km is sufficient to meet the needs of short-distance transportation of construction materials in cities.

Specification:

main parameters	
Condition	New
Steering	left
Horsepower	380hp
Emission Standard	EURO 5
Forward Shift Number	12
Maximum Torque(Nm)	1900
Cargo Tank Dimension	6300X2350X1500mm
Drive Wheel	6X4
Passengers	3
Rear Camera	360°
ABS(Antilock Braking System)	YES
ESC(Electronic Stability Control System)	YES
Touch Screen	YES








 **AUTOKING** Henan Autoking Industry Co., Ltd.

 +8618300655268

 video@autoking.com

 commercial-autos.com

No. 86, Jingsan Road, Jinshui District, Zhengzhou City, Henan Province, China