

EURO 5 8x4 Sinotruk Howo Dump Truck Used 380hp Tipper Dump Truck

Our Product Introduction

for more products please visit us on commercial-autos.com

Basic Information

- Place of Origin: China
- Minimum Order Quantity: 1
- Price: Available for negotiation
- Packaging Details: Waxing in Bulk ship, Roro ship, Container
- Delivery Time: 30-45 working days
- Payment Terms: T/T
- Supply Ability: 1,000 units per month

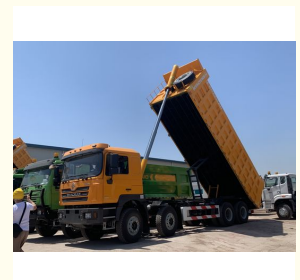


Product Specification

- Condition: New
- Steering: Left
- Horsepower: 351 - 450hp
- Emission Standard: EURO 5
- Segement: Medium-sized Truck
- Market Segement: Urban Construction Muck Transportation
- Forward Shift Number: 12
- Maximum Torque(Nm): 1500-2000Nm
- Cargo Tank Dimension: 4150X2300X2300
- Cargo Tank Length: ≤4.2m
- Gross Vehicle Weight: 5-10T
- Drive Wheel: 6x4
- Passengers: 3
- Rear Camera: 360°
- ABS(Antilock Braking): Yes



More Images



Product Description

Howo Dump Truck 8x4 Or Used Sinotruk Dump Truck Tipper Dump Truck

Product features:

The cab of the vehicle has a high-strength steel ratio of 26%, and the optimized structural design can meet the requirements of the European ECER29 collision regulations.

The brake drum of this dump truck is made of ultra-high-strength vermicular cast iron, which is highly wear-resistant. In addition, it also innovatively uses electromagnetic brake relay valves, which make the braking response 50% faster than before and shorten the braking distance by 20%.

Considering that dump trucks are often used on city roads, where there are many cars and people, field of vision becomes very important. So this dump truck first lowers the overall height of the instrument panel, so that the field of vision in the front and lower part of the car is widened, and it is easier to see people in front of the car.

Product advantages:

The engine adopts modular design, low-elastic piston rings, forged steel crankshaft and other high-reliability components, plus piston pins and bearings with wear-resistant coatings, and the lubricating oil only needs to be replaced every 50,000 kilometers.

The wheel side of the axle adopts a weight-reducing and lightweight design, the bridge housing is a high-strength cast bridge housing, and the main reducer is a high-torque performance product newly developed in combination with European technology. It is not only light but also can withstand greater torque.

In the design of the rear suspension, the large support of the vehicle's balance shaft is connected to the sub-plate and wing plate of the frame at the same time. The advantage is that its deformation will be smaller under heavy load conditions and its reliability will be higher.

The balance shaft also uses an integrated maintenance-free rubber bushing, which does not require any care or maintenance and has a strong shock-absorbing effect.

Specification:

main parameters	
Condition	New
Steering	left
Horsepower	380hp
Emission Standard	EURO 5
Forward Shift Number	12
Maximum Torque(Nm)	1900
Cargo Tank Dimension	6300X2350X1500mm
Drive Wheel	6X4
Passengers	3
Rear Camera	360°
ABS(Antilock Braking System)	YES
ESC(Electronic Stability Control System)	YES
Touch Screen	YES



