



## 1000L Self Loading Concrete Mixer Truck 440hp Howo Concrete Mixture Truck

Our Product Introduction

for more products please visit us on [commercial-autos.com](http://commercial-autos.com)

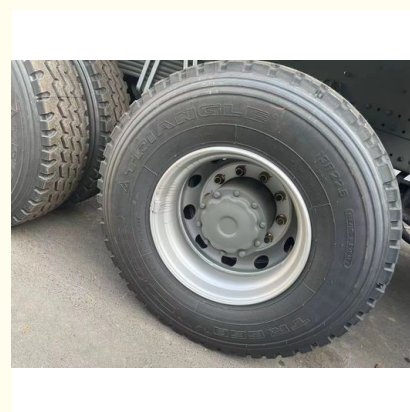
### Basic Information

- Place of Origin: Henan, China
- Brand Name: HOWO
- Minimum Order Quantity: 1
- Price: Available for negotiation
- Packaging Details: Waxing in Bulk ship, Roro ship, Container
- Delivery Time: 30-45 working days
- Payment Terms: T/T
- Supply Ability: 1,000 units per month

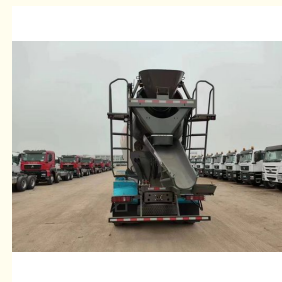


### Product Specification

- Gross Vehicle Weight: 6001-14000 Kg, 14.1T
- Condition: New
- Horsepower: 440hp
- Segement: Concrete Mixer Truck
- Forward Shift Number: 16
- Passengers: 3
- ESC(Electronic Stability Control System): Yes
- Steering: Left
- Emission Standard: Eruo 6
- Maximum Torgue(Nm): 2100
- Highlight: 1000L Self Loading Concrete Mixer Truck, 440hp Howo Concrete Mixture Truck, 1000L Concrete Mixture Truck



### More Images



## Product Description

High Quality Howo Concrete Mixture Truck Self Loading Concrete Mixer Truck

### Product features:

It adopts 16-ton MAT16ZG self-adjusting double rear axle, and the rear axle main reduction ratio is 5.73, with strong load-bearing capacity and high transmission efficiency. The rear axle housing adopts reinforced stamping welding, with reasonable structure and light weight, which meets the lightweight needs of users and helps to achieve compliance and multi-pulling. The three-section split bumper is much better than the one-piece design. It is convenient for later repair and replacement and can effectively reduce maintenance costs. Below the main bumper is a low-position bumper with a low wind resistance design. The cab suspension has a break-back function, which is also known as the "cab overall collision back-shifting technology" by truck drivers. When the vehicle has a head-on collision, the cab can be moved back as a whole to ensure the safety of the driver and passengers. The halogen headlights are square and beautiful in shape. The high and low beam headlights, fog lights and turn signals are independently distributed at both ends of the three-section bumper, and the illumination brightness and illumination distance are both ideal.

### Product advantages:

The blades are designed with continuous trajectory lines, which ensures uniform mixing, fast discharging and low residual rate. The key parts are designed with pressure relief holes to extend the life of the tank and blades. The integrated operation of the longitudinal valve assembly enables water inlet and quick switching of cleaning, and real-time observation of pressure enables automatic cleaning of the mixing tank, blades, feed and discharge ports. The oil pump and motor adopt internationally renowned brands such as Italy PMP, Germany Rexroth and the United States Sauer, with stable operation, low failure rate and long service life

### Specification:

main parameters	
Conditio	new
Horsepower	440
Segement	Concrete mixer truck
Forward Shift Number	16
Gross Vehicle Weight	14.1
Passengers	3
Rear Camera	360
ESC(Electronic Stability Control System)	yes
Steering	left
Emission Standard	Euro 6
Market Segement	Logistics and transportation
Maximum Torque(Nm)	2100
Drive Wheel	6*4
Seat Rows	1

ABS(Antilock Braking System)	yes
Touch Screen	yes
Fuel Type	diesel
Cylinders	6
Transmission Type	Manual
Fuel Tank Capacity	1000
Cruise Control	ACC
Window	automatic
Engine Brand	Weichai Power
Reverse Shift Number	2
Driver's Seat	air suspension
Multimedia System	yes
Air Conditioner	automatic
Tire Number	10
MAX SPEED	110km/h
Wheelbase	4800+1400mm







