



Used Howo Sinotruck Dumper Truck 6x4 With Maximum Torque 1500-2000Nm In Good Condition

Our Product Introduction

for more products please visit us on commercial-autos.com

Basic Information

- Place of Origin: Henan, China
- Brand Name: SINOTRUCK
- Minimum Order Quantity: 1
- Price: Available for negotiation
- Packaging Details: Waxing in Bulk ship, Roro ship, Container
- Delivery Time: 30-45 working days
- Payment Terms: T/T
- Supply Ability: 1,000 units per month



Product Specification

- Condition: New
- Steering: Left
- Horsepower: 351 - 450hp
- Emission Standard: Euro 2
- Segement: Mini Truck
- Market Segement: Engineering Transportation
- Engine Brand: WEICHAI
- Fuel Type: Diesel
- Engine Capacity: < 4L
- Gear Box Brand: SINOTRUCK
- Transmission Type: Manual
- Forward Shift Number: 10
- Reverse Shift Number: 2
- Maximum Torque(Nm): 1500-2000Nm
- Dimensions (L X W X H): 8650x2550x3500



More Images



Product Description

Product features:

Engine Type: The HOWO NX380 is equipped with a WP12.430E201 engine that provides a maximum power output of 430 horsepower (HP). This engine is known for its reliability and performance in demanding conditions.

Transmission: It utilizes a manual transmission system that offers durability and control over various terrains.

Drive System: The 6x4 drive configuration ensures optimal traction and stability, making it suitable for rough and uneven surfaces.

Product usage:

Construction Sites: Ideal for transporting construction materials such as sand, gravel, and dirt. The dump truck's hydraulic system allows for quick and efficient unloading, which is crucial in construction operations.

Mining Operations: Suitable for use in mining sites for hauling ore and other heavy materials. Its powerful engine and durable build can handle the harsh conditions often found in mining environments.

Agricultural Use: Can be used in agricultural settings for transporting bulk materials like fertilizers and seeds. The dump truck's ability to handle heavy loads makes it valuable in large-scale farming operations.

Product advantages:

Durability: Built with high-quality materials and engineering, the HOWO NX380 6x4 is designed to endure heavy use and challenging environments.

Efficiency: The efficient hydraulic dump mechanism reduces downtime and increases productivity by streamlining the unloading process.

Comfort and Safety: The truck's cabin is designed to maximize driver comfort, which can improve operational efficiency and reduce driver fatigue. Enhanced safety features contribute to safer operations and lower risk of accidents.

After-sales service

AUTOKING has four overseas branches to develop overseas customers. We also carry out after-sales service guarantee for vehicles.

Is the price cheap?

The price is chosen by comparing several car manufacturers, and we also hope that customers can compare several times and finally choose our company.

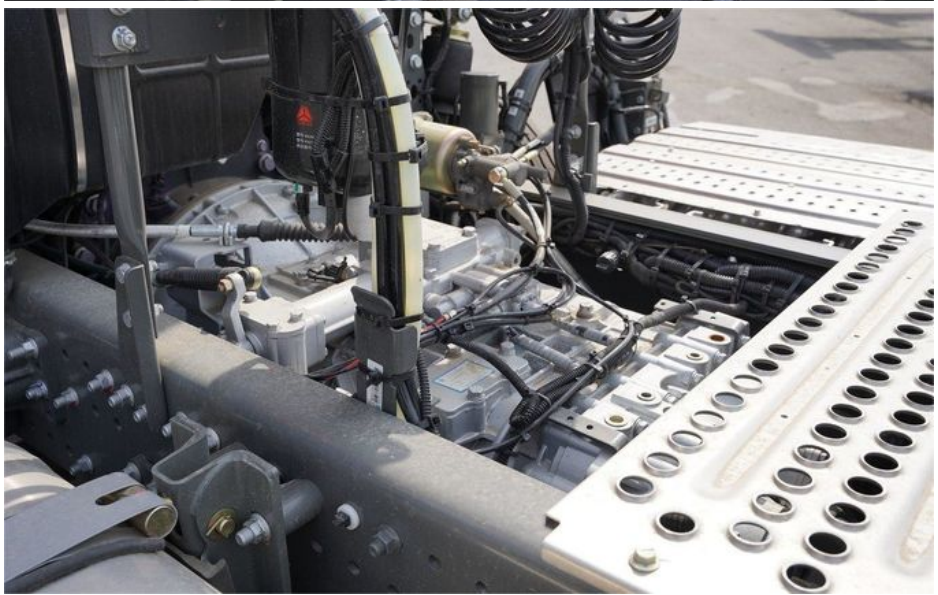
Is international logistics guaranteed?

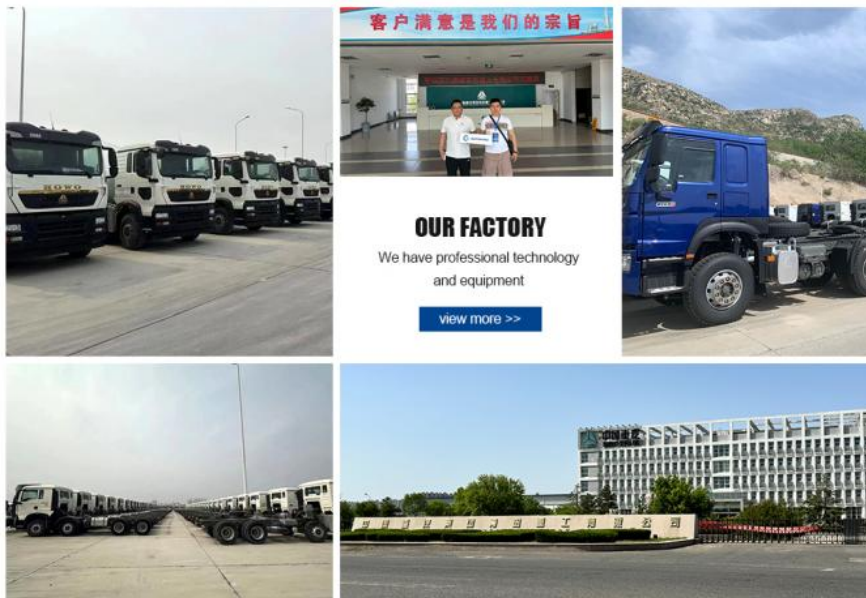
After the purchase of goods are shipped, the company tracks the order in full. Shipping video and transport video we provide for you at any time.

Specification:

| | |
|------------------------------|---|
| Condition | New |
| Horsepower | 351 - 450hp |
| Emission Standard | Euro 2 |
| Market Segement | Engineering transportation |
| Gross Vehicle Weight | 20-25T |
| Drive Wheel | 6x4 |
| After-sales Service Provided | Video technical support, Online support |







OUR FACTORY

We have professional technology
and equipment

[view more >>](#)



AUTOKING Henan Autoking Industry Co., Ltd.



+8618300655268



video@autoking.com



commercial-autos.com

No. 86, Jingsan Road, Jinshui District, Zhengzhou City, Henan Province, China