

## 6x4 Howo Dump Truck 371 420Hp Sinotruk Dump Truck 12 Wheeler

Our Product Introduction

for more products please visit us on [commercial-autos.com](http://commercial-autos.com)

### Basic Information

- Place of Origin: Henan, China
- Brand Name: SINOTRUCK
- Minimum Order Quantity: 1
- Price: Available for negotiation
- Packaging Details: Waxing in Bulk ship, Roro ship, Container
- Delivery Time: 30-45 working days
- Payment Terms: T/T
- Supply Ability: 1,000 units per month

AUTOKING



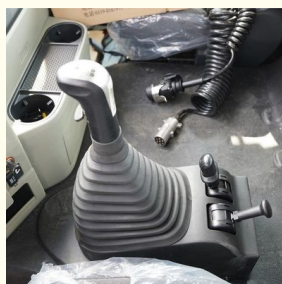
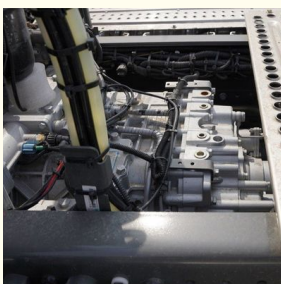
### Product Specification

- Condition: New
- Steering: Left
- Horsepower: 351 - 450hp
- Emission Standard: Euro 2
- Segement: Heavy Truck
- Market Segement: Urban Construction Muck Transportation
- Engine Brand: WEICHAI
- Fuel Type: Petrol / Gasoline
- Engine Capacity: < 4L
- Gear Box Brand: SINOTRUCK
- Transmission Type: Manual
- Forward Shift Number: 10
- Reverse Shift Number: 1
- Maximum Torque(Nm): 1500-2000Nm
- Cargo Tank Dimension: 5600X2300X1500

AUTOKING



### More Images



## Product Description

Howo Dump Truck Sinotruk Howo 371 420 Hp 12 Wheel Manual Transmission Air Conditioner

### Product features:

Body and chassis. Body size: The length, width and height of the body vary according to the specific configuration and regulatory requirements. Generally speaking, the body length of this model may exceed 8 meters, and the width and height are also larger to accommodate more cargo.

Chassis parameters: The chassis design is sturdy and durable, and is made of high-quality materials and advanced processes. Parameters such as the description of the front and rear axles, wheelbase, approach angle and departure angle all reflect the stability and passability of the vehicle.

### Product usage:

Engineering operations. This model can play an important role in various engineering operation sites (such as infrastructure construction, road construction, etc.). Its self-unloading function makes cargo unloading more convenient and quick, meeting the engineering operation's demand for efficiency and convenience. At the same time, its stable performance and good passability also ensure the smooth progress of engineering operations.

### Product advantages:

Strong carrying capacity. The vehicle has a high total mass and a large rated load, which enables the vehicle to easily carry bulk goods or perform heavy engineering operations. This is especially important for application scenarios that require high carrying capacity.

Efficient self-unloading function. The design of the self-unloading function makes cargo unloading more convenient and quick, improves operating efficiency and reduces labor intensity. This has significant advantages for working conditions that require frequent cargo unloading.

### After-sales service

AUTOKING has four overseas branches to develop overseas customers. We also carry out after-sales service guarantee for vehicles.

### Is the price cheap?

The price is chosen by comparing several car manufacturers, and we also hope that customers can compare several times and finally choose our company.

### Is international logistics guaranteed?

After the purchase of goods are shipped, the company tracks the order in full. Shipping video and transport video we provide for you at any time.

### Specification:


Condition	New
Horsepower	351 - 450hp
Emission Standard	Euro 2
Market Segement	Engineering transportation
Gross Vehicle Weight	20-25T
Drive Wheel	6x4
After-sales Service Provided	Video technical support, Online support








 **AUTOKING** Henan Autoking Industry Co., Ltd.

 +8618300655268

 video@aaautoking.com

 commercial-autos.com

No. 86, Jingsan Road, Jinshui District, Zhengzhou City, Henan Province, China